

Uniform Line Array

DESCRIPTION

The **ULA-16.16** is a very slim profile continuous line array (3" x 6" in cross section) with a uniform 120° x 8° vertical coverage pattern. Each ULA-16.16 employs sixteen 3.5" long-excursion LF drivers and sixteen precision HF ribbon elements with a passive crossover network.

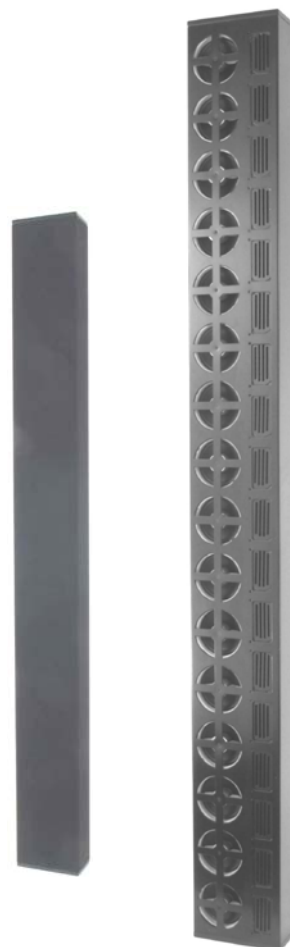
It has been designed to be used both as a single loudspeaker for medium-throw applications, and stacked in multiples to create large arrays for very long-throw applications.

KEY FEATURES:

- slim profile (3" x 6" in cross section)
- 120° H x 8° V coverage pattern
- can be stacked to form large long throw arrays
- line behavior to 460 Hz (single loudspeaker)
- projection up to 300 feet (multiple loudspeakers)

APPLICATIONS:

- churches
- performing arts centers
- theaters
- transit centers



NOMINAL DATA

Frequency Response	120 – 20,000 Hz, ± 3 dB
Sensitivity	94 dB @ 2.83 volts / 1M
Impedance	8 Ω
Power Handling	500 W long-term (AES-2)
Maximum Output	120 dB long-term 126 dB peak
Nominal Coverage Angles	120° H x 8° V
Dimensions	height: 58.63 " / 1489 mm width: 6.00 " / 152 mm depth: 3.00 " / 76 mm
Net Weight	29.5 lbs / 13.2 kg
Shipping Weight	35.0 lbs / 17.5 kg

DESCRIPTIVE DATA

System Configuration	Continuous full-range line array
Components & Loading	(16) 3.5" long-excursion LF drivers; (16) 3.2" ribbon HF drivers
Recommended High-Pass Filter	4 th order Butterworth @ 100 Hz
Cabinet Type	Sealed enclosure
Enclosure Material	Steel, with composite endcaps
Finish	Black or White (custom colors available)
Connectors	NL4 and dual binding head screws
Suspension Hardware	(4) 1/4-20 points in rear corners; OmniMount 120.0 Series compatible
Grille	Integral fabric wrap around steel chassis