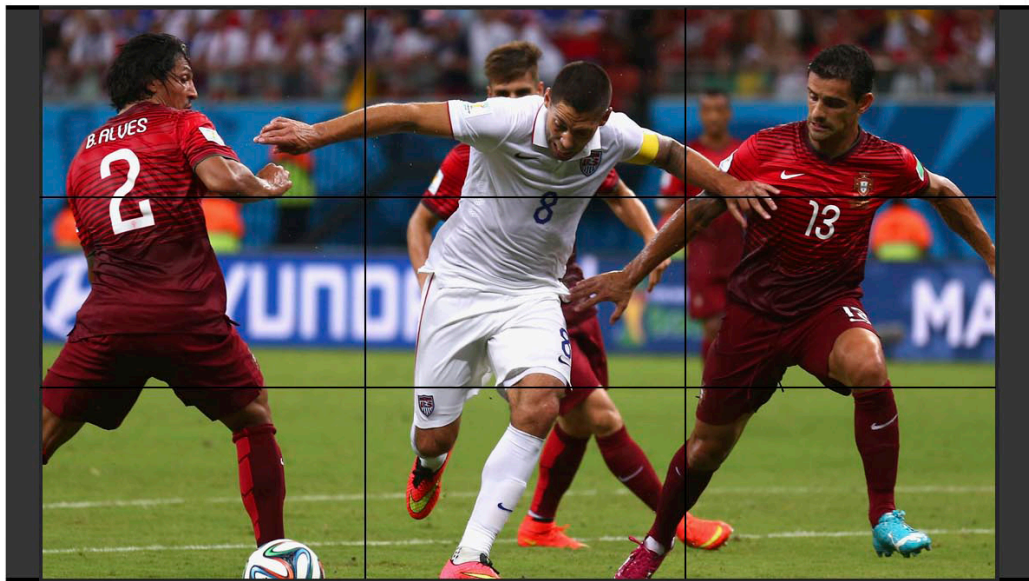




# FlexArray™



Project Specific Line Arrays  
Configured for Video Walls & LED Displays



## The FlexArray Solution

The FlexArray has been developed to provide premium audio support for Video Walls and large LED displays. Each FlexArray system is factory configured for your project based on construction documents or contractor supplied field measurements.

FlexArray loudspeakers employ a combination of the shaped coverage line array technology from our SLA family of loudspeakers, a compact dipole low frequency steering module, and a sophisticated amplifier with DSP by Powersoft. This unique self-powered hybrid achieves the precise vertical control and uniform back of room coverage that is essential for high speech intelligibility and musical impact in longer reverberant spaces.

The FlexArray features the latest "smart amplifier" technology from Powersoft. Their four-channel DSP amplifier module handles speaker processing and dynamically apportions 1000 watts of power to amplifier channels based on program demands. This active amplifier management yields an electrical efficiency of better than 90%.

The thin profile of FlexArray loudspeakers makes it very easy to link the apparent audio source with the image on its display. Precise articulate sound is projected from loudspeakers which recede into the shadow of the display.

*Typical configuration for high display mount*



Typical configuration for mid display mount



Typical configuration for low display mount





## Micro-Sub - 408P

The Micro-Sub 408P is a very compact sub bass designed as a companion for FlexArray systems. When used in conjunction with FlexArray it provides low frequency extension, reduces IM distortion in the mid-bass and boosts maximum system SPL. A Powersoft onboard amplifier with DSP produces maximum bass output from a minimum enclosure size. It can be surface mounted or easily integrated into wall constructions. Dimensions: 14.25" H x 34.25" W x 6.50" D.

